



Doncaster and Bassetlaw  
Teaching Hospitals  
NHS Foundation Trust

# Structure Charts for DBTH

Version: December v.2



## Executive Directors



**Richard Parker OBE**  
Chief Executive



**Karen Jessop**  
Chief Nurse



**Denise Smith**  
Chief Operating Officer



**Zoe Lintin**  
Chief People Officer



**Jonathan Sargeant**  
Chief Financial Officer



**Dr Tim Noble**  
Executive Medical Director



**Zara Jones**  
Deputy Chief Executive

## Non-Executive Directors



**Suzy Brain England OBE**  
Chair of the Board



**Jo Gander**  
Non-executive Director (Clinical)



**Dr Emyr Jones**  
Non-executive Director



**Kath Smart**  
Non-executive Director and Deputy Chair



**Mark Bailey**  
Non-executive Director



**Mark Day**  
Senior Independent Director



**Hazel Brand**  
Non-executive Director



**Lucy Nickson**  
Non-executive Director

## Other Directors and colleagues who attend Board



**Emma Shaheen**  
Director of Communications and Engagement



**Rebecca Allen**  
Associate Director of Strategy, Partnerships and Governance



**Lois Mellor**  
Director of Midwifery



**Prof. Sam Debbage**  
Director of Education and Research



**Dan Howard**  
Chief Information Officer



**Dr Kirsty Edmondson Jones**  
Director of Infrastructure



## Chief Executive



**Richard Parker OBE**  
Chief Executive  
[rparker7@nhs.net](mailto:rparker7@nhs.net)



**Zara Jones**  
Deputy Chief Executive  
[zara.jones@nhs.net](mailto:zara.jones@nhs.net)



**Emma Shaheen**  
Director of Communications and Engagement  
[emma.shaheen@nhs.net](mailto:emma.shaheen@nhs.net)

## P&OD and E&R



**Zoe Lintin**  
Chief People Officer  
[zoelintin@nhs.net](mailto:zoelintin@nhs.net)



**Anthony Jones**  
Deputy Director of P&OD  
[anthony.jones3@nhs.net](mailto:anthony.jones3@nhs.net)



**Prof. Sam Debbage**  
Director of Education and Research  
[sam.debbage@nhs.net](mailto:sam.debbage@nhs.net)



**Gavin Portier**  
Head of Leadership & Organisational Development  
[g.portier@nhs.net](mailto:g.portier@nhs.net)



**Paula Hill**  
Freedom to Speak Up Guardian  
[paula.hill12@nhs.net](mailto:paula.hill12@nhs.net)

## Chief Nurse



**Karen Jessop**  
Chief Nurse  
[karen.jessop@nhs.net](mailto:karen.jessop@nhs.net)



**Simon Brown**  
Deputy Chief Nurse  
[Simon.Brown27@nhs.net](mailto:Simon.Brown27@nhs.net)



**Kirsty Clarke**  
Associate Chief Nurse- Safe Staffing  
[kirsty.clarke4@nhs.net](mailto:kirsty.clarke4@nhs.net)



**Dr Ken Agwuh**  
Director of Infection & Control  
[kenneth.agwuh@nhs.net](mailto:kenneth.agwuh@nhs.net)



**Marie Hardacre**  
Associate Chief Nurse for Patient Safety and Quality  
[m.hardacre@nhs.net](mailto:m.hardacre@nhs.net)



**Heather Jackson**  
Director of Allied Health Professionals  
[heather.jackson@nhs.net](mailto:heather.jackson@nhs.net)



**Professor Parveen Ali**  
Professor of Nursing  
[parveen.ali@sheffield.ac.uk](mailto:parveen.ali@sheffield.ac.uk)

## Finance and Infrastructure



**Jon Sargeant**  
Chief Financial Officer  
[jonathan.sargeant@nhs.net](mailto:jonathan.sargeant@nhs.net)



**Dr Kirsty Edmondson Jones**  
Director of Infrastructure  
[kirsty.edmondson-jones@nhs.net](mailto:kirsty.edmondson-jones@nhs.net)



**Dan Howard**  
Chief Information Officer  
[dan.howard3@nhs.net](mailto:dan.howard3@nhs.net)



**Dr Mike Whiteside**  
Chief Clinical Information Officer  
[mike.whiteside@nhs.net](mailto:mike.whiteside@nhs.net)



**Yasmin Ahmed**  
Deputy Director of Finance  
[yasmin.ahmed10@nhs.net](mailto:yasmin.ahmed10@nhs.net)



**Richard Somerset**  
Head of Procurement  
[r.somerset@nhs.net](mailto:r.somerset@nhs.net)



## Medical Director



**Dr Nick Mallaband**  
Acting Executive Medical Director  
[nicholas.mallaband@nhs.net](mailto:nicholas.mallaband@nhs.net)



**Dr Ken Agwuh**  
Medical Director for Workforce  
[kenneth.agwuh@nhs.net](mailto:kenneth.agwuh@nhs.net)



**Dr Sudipto Ghosh**  
Associate Medical Director for Professional Standards and Revalidation  
[sudiptoghosh@nhs.net](mailto:sudiptoghosh@nhs.net)



**Dr Youssef Sorour**  
Associate Medical Director for Clinical Safety  
[y.sorour@nhs.net](mailto:y.sorour@nhs.net)



**Dr Joseph John**  
Medical Director for Operational Stability and Optimisation  
[joseph.john@nhs.net](mailto:joseph.john@nhs.net)



**Julie Butler**  
Senior Manager to the Executive Medical Director  
[julie.butler@nhs.net](mailto:julie.butler@nhs.net)

## Chief Operating Officer



**Denise Smith**  
Chief Operating Officer  
[denise.smith43@nhs.net](mailto:denise.smith43@nhs.net)



**Ben Vasey**  
Deputy Chief Operating Officer - Elective  
[benjamin.vasey@nhs.net](mailto:benjamin.vasey@nhs.net)



**Suzanne Stubbs**  
Deputy Chief Operating Officer  
[suzanne.stubbs2@nhs.net](mailto:suzanne.stubbs2@nhs.net)



**Dr Anurag Agrawal**  
Divisional Director for Medicine  
[anurag.agrawal1@nhs.net](mailto:anurag.agrawal1@nhs.net)



**Dr Jochen Seidel**  
Divisional Director for Clinical Specialty Services  
[jochen.seidel@nhs.net](mailto:jochen.seidel@nhs.net)



**Mr Eki Emovon**  
Divisional Director for Women and Children  
[eki.emovon@nhs.net](mailto:eki.emovon@nhs.net)



**Mr Ranjit Pande**  
Divisional Director for Surgery  
[ranjit.pande1@nhs.net](mailto:ranjit.pande1@nhs.net)



**Dr Eithne Cummins**  
Divisional Director for Urgent and Emergency Care  
[eithne.cummins@nhs.net](mailto:eithne.cummins@nhs.net)

## Deputy Chief Executive



**Zara Jones**  
Deputy Chief Executive  
[zara.jones@nhs.net](mailto:zara.jones@nhs.net)



**Rebecca Allen**  
Associate Director of Strategy, Partnerships and Governance  
[rebecca.allen75@nhs.net](mailto:rebecca.allen75@nhs.net)



**Paul Mapley**  
Associate Director of Planning, Performance and Improvement  
[p.mapley@nhs.net](mailto:p.mapley@nhs.net)



# Chief Operating Officer Division

## Chief Operating Officer structure

### Deputy Chief Operating Officers



**Denise Smith**  
Chief Operating Officer  
[denise.smith43@nhs.net](mailto:denise.smith43@nhs.net)

**Carolyn Taylor**  
PA to Executive Director  
[carolyn.taylor4@nhs.net](mailto:carolyn.taylor4@nhs.net)



**Ben Vasey**  
Deputy Chief Operating Officer  
- Elective  
[benjamin.vasey@nhs.net](mailto:benjamin.vasey@nhs.net)



**Suzanne Stubbs**  
Deputy Chief Operating Officer  
[suzanne.stubbs2@nhs.net](mailto:suzanne.stubbs2@nhs.net)

### Divisional Directors

#### Cancer services



**Mr Olumuyiwa Olubowale**  
Cancer Lead for DBTH  
[olumuyiwaolubowale@nhs.net](mailto:olumuyiwaolubowale@nhs.net)



**Lesley Barnett**  
Head of Cancer Services  
[lesley.barnett3@nhs.net](mailto:lesley.barnett3@nhs.net)



**Jackie Simpkin**  
Lead Cancer Manager  
[j.simpkin@nhs.net](mailto:j.simpkin@nhs.net)



**Toni Peet**  
Lead Cancer Nurse  
[toni.peet@nhs.net](mailto:toni.peet@nhs.net)

#### Patient Access

#### Patient Flow and Site team



**Sam Sidwell**  
Head of Patient Flow  
[samantha.sidwell@nhs.net](mailto:samantha.sidwell@nhs.net)

#### Emergency Planning



**Jeannette Reay**  
Emergency Planning Officer  
[jeannette.reay@nhs.net](mailto:jeannette.reay@nhs.net)



**Dr Anurag Agrawal**  
Divisional Director for Medicine  
[anurag.agrawal1@nhs.net](mailto:anurag.agrawal1@nhs.net)



**Dr Jochen Seidel**  
Divisional Director for Clinical Specialty Services  
[jochen.seidel@nhs.net](mailto:jochen.seidel@nhs.net)



**Mr Eki Emovon**  
Divisional Director for Women and Children  
[eki.emovon@nhs.net](mailto:eki.emovon@nhs.net)



**Mr Ranjit Pande**  
Divisional Director for Surgery  
[ranjit.pande1@nhs.net](mailto:ranjit.pande1@nhs.net)



**Dr Eithne Cummins**  
Divisional Director for Urgent and Emergency Care  
[eithne.cummins@nhs.net](mailto:eithne.cummins@nhs.net)

**Divisional General Manager**

**Divisional Nurse,  
Director of  
Midwifery and  
Director of AHPs**

## Corporate Nursing structure



**Simon Brown**  
Deputy Chief Nurse  
[simon.brown27@nhs.net](mailto:simon.brown27@nhs.net)

**Yvonne Whittaker**

PA to Deputy Chief Nurse, Associate Chief Nurse & Patient Experience  
[yvonne.whittaker@nhs.net](mailto:yvonne.whittaker@nhs.net)



**Marie Hardacre**  
Associate Chief Nurse- Patient Safety and Quality  
[m.hardacre@nhs.net](mailto:m.hardacre@nhs.net)



**Kirsty Clarke**  
Associate Chief Nurse- Workforce  
[kirsty.clarke4@nhs.net](mailto:kirsty.clarke4@nhs.net)



**Michelle Corbett**  
Lead Nurse for Quality Assurance  
[michelle.corbett3@nhs.net](mailto:michelle.corbett3@nhs.net)



**Denise Phillip**  
Head of Safeguarding  
[d.phillip@nhs.net](mailto:d.phillip@nhs.net)



**Mim Boyack**  
IPC Lead  
[miriam.boyack@nhs.net](mailto:miriam.boyack@nhs.net)



**Kelly Phillips**  
Lead Nurse Skin Integrity  
[kelly.moore6@nhs.net](mailto:kelly.moore6@nhs.net)

**Aileen Knowles**  
Named Practitioner  
[aileen.knowles@nhs.net](mailto:aileen.knowles@nhs.net)



**Nicola Severein-Kirk**  
Lead Nurse Patient Safety  
[nicola.severein-kirk@nhs.net](mailto:nicola.severein-kirk@nhs.net)

**Lesley Marshall**  
Workforce Matron  
[lesley.marshall4@nhs.net](mailto:lesley.marshall4@nhs.net)

**Julie Wragg**  
Person Centred Care Practitioner Dementia and Delerium  
[j.wragg@nhs.net](mailto:j.wragg@nhs.net)



**Grace Mhora**  
Head of Patient Engagement, Experience and Involvement  
[grace.mhora@nhs.net](mailto:grace.mhora@nhs.net)

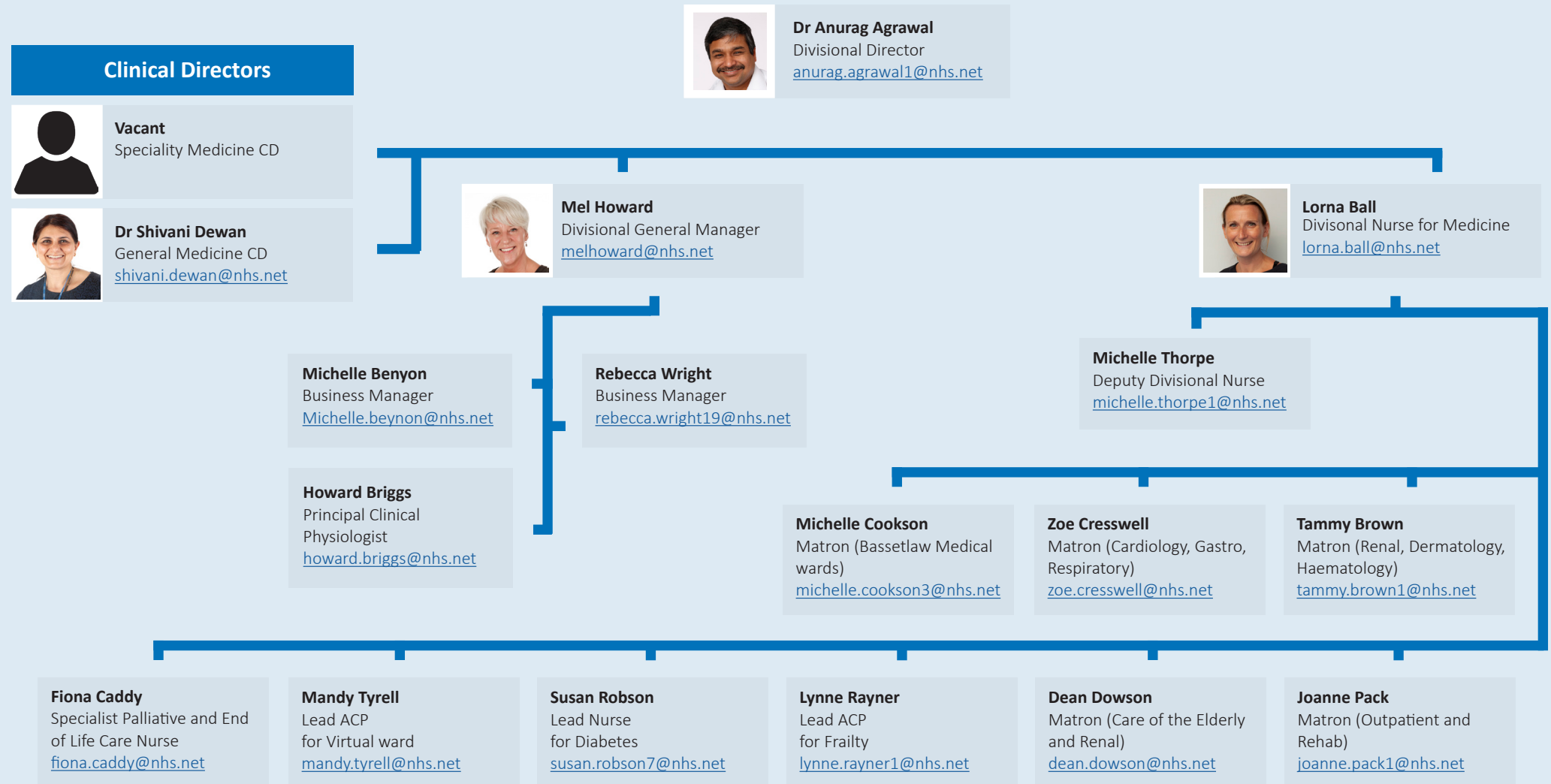
**Stacey Nutt**  
Senior Nurse Workforce  
[staceynutt@nhs.net](mailto:staceynutt@nhs.net)

**Lindsey Stocks**  
Fall Practitioner  
[lindseyann.stocks@nhs.net](mailto:lindseyann.stocks@nhs.net)

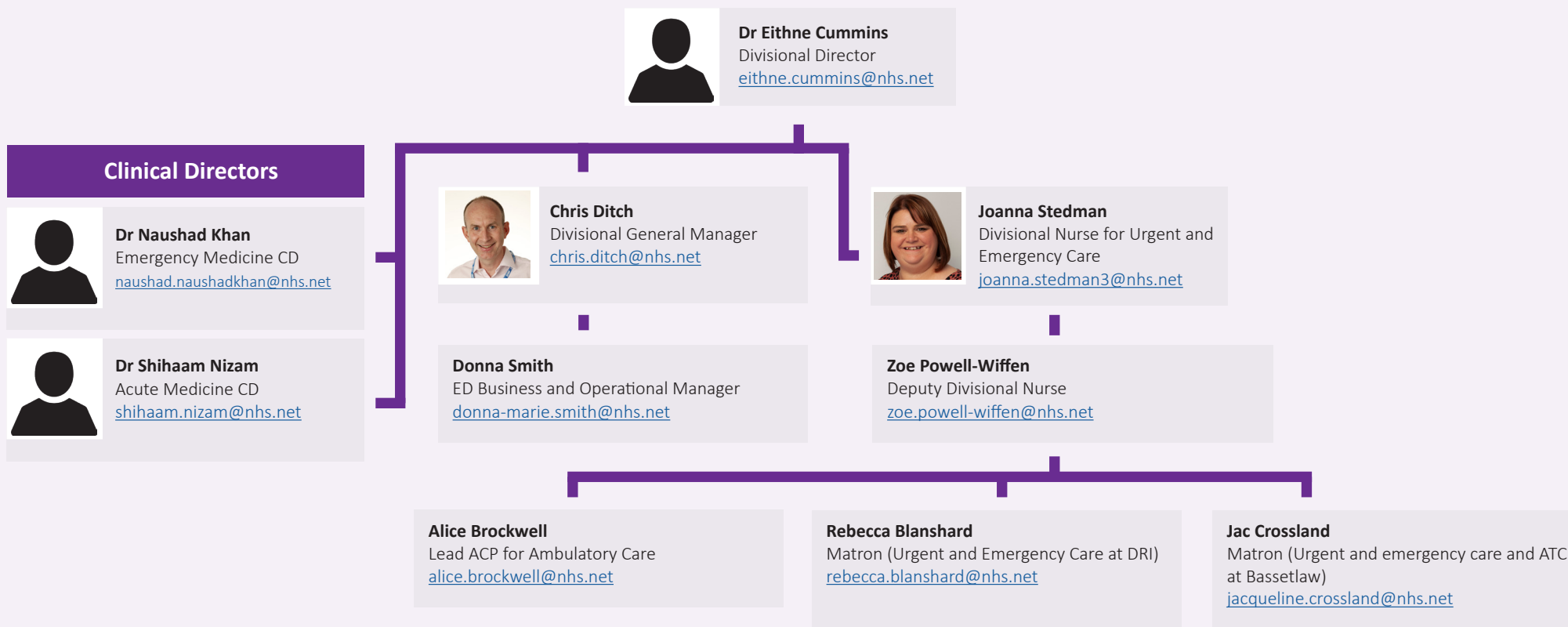
**Jeanette Cliff Taylor**  
Assurance Lead Nurse  
[jeanette.cliff-taylor@nhs.net](mailto:jeanette.cliff-taylor@nhs.net)

**Jenny Hunt**  
Professional Nurse Advocate  
[jenny.hunt2@nhs.net](mailto:jenny.hunt2@nhs.net)

## Medicine structure



## Urgent and Emergency Care structure





## Surgery structure

### Clinical Directors



**Kathryn Rigby**

Breast, Vascular, Urology and Gastrointestinal CD

[kathryn.rigby@nhs.net](mailto:kathryn.rigby@nhs.net)



**Mr Omar Hussain**

Ear Nose Throat, Ophthalmology, OMFS, Dentistry and Audiology CD

[omar.hussain2@nhs.net](mailto:omar.hussain2@nhs.net)



**Kathryn Rigby**

Endoscopy and Gastro CD

[kathryn.rigby@nhs.net](mailto:kathryn.rigby@nhs.net)



**Dr Arran Marriott**

Trauma Lead

[arran.marriott3@nhs.net](mailto:arran.marriott3@nhs.net)



**Mr Daniel Morell**

Trauma and Orthopaedics CD

[daniel.morell@nhs.net](mailto:daniel.morell@nhs.net)



**Mr Ranjit Pande**

Divisional Director

[ranjit.pande1@nhs.net](mailto:ranjit.pande1@nhs.net)



**Janette Bailey**

Interim Divisional General Manager

[janette.bailey1@nhs.net](mailto:janette.bailey1@nhs.net)



**Elizabeth Dunwell**

Divisional Nurse for Surgery

[elizabethdunwell@nhs.net](mailto:elizabethdunwell@nhs.net)



**Anna Hegarty**

Deputy Divisional Nurse

[anna.hegarty@nhs.net](mailto:anna.hegarty@nhs.net)

**Christopher Dunning**

Business Manager for Trauma & Orthopaedics  
[christopher.dunning@nhs.net](mailto:christopher.dunning@nhs.net)

**Vikki Baxter**

Business Manager for GI and Endoscopy  
[v.baxter1@nhs.net](mailto:v.baxter1@nhs.net)

**Janette Bailey**

Business Manager for Specialist Surgery  
[janette.bailey1@nhs.net](mailto:janette.bailey1@nhs.net)

**Kerry Allen**

Business Manager for Head and Neck  
[kerry.allen3@nhs.net](mailto:kerry.allen3@nhs.net)

**Margaret Harris**

Business Manager  
[margaret.harris7@nhs.net](mailto:margaret.harris7@nhs.net)

**Jayne Bagnall**

Matron (T&O)  
[jaynebagnall@nhs.net](mailto:jaynebagnall@nhs.net)

**Helen Humphrey-Shepherd**

Matron (Breast)  
[h.humphrey-shepherd@nhs.net](mailto:h.humphrey-shepherd@nhs.net)

**Theresa Allen**

Matron (Urology and Endoscopy)  
[theresa.allen1@nhs.net](mailto:theresa.allen1@nhs.net)

**Rachel Gibson**

Lead Nurse Ambulatory Care  
[rachel.gibson9@nhs.net](mailto:rachel.gibson9@nhs.net)

**Sarah Chapman**

Matron (Surgery and Assessment)  
[sarah.chapman17@nhs.net](mailto:sarah.chapman17@nhs.net)

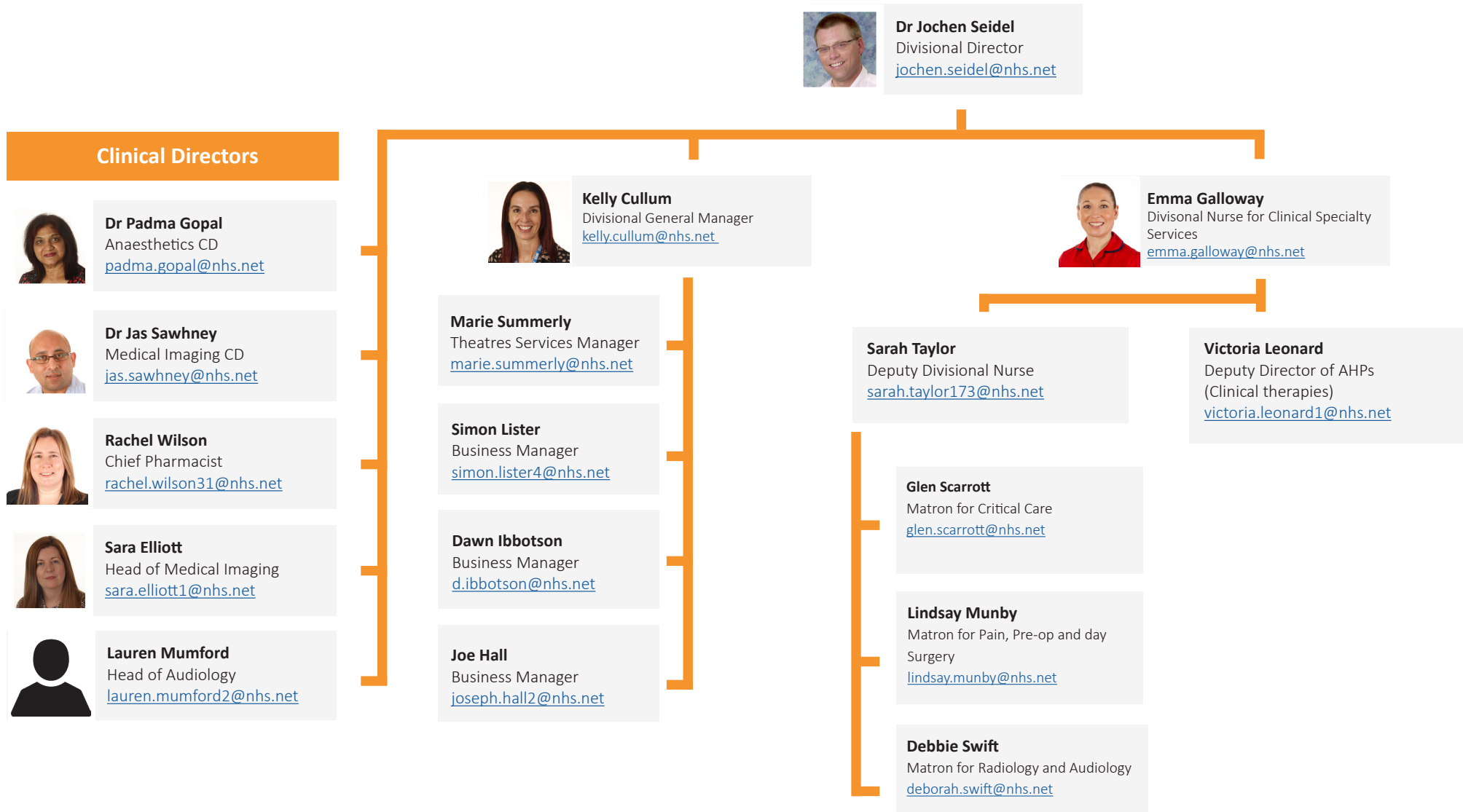
**Rebecca McCombe**

Matron (Surgery and Assessment)  
[rebecca.mccombe@nhs.net](mailto:rebecca.mccombe@nhs.net)

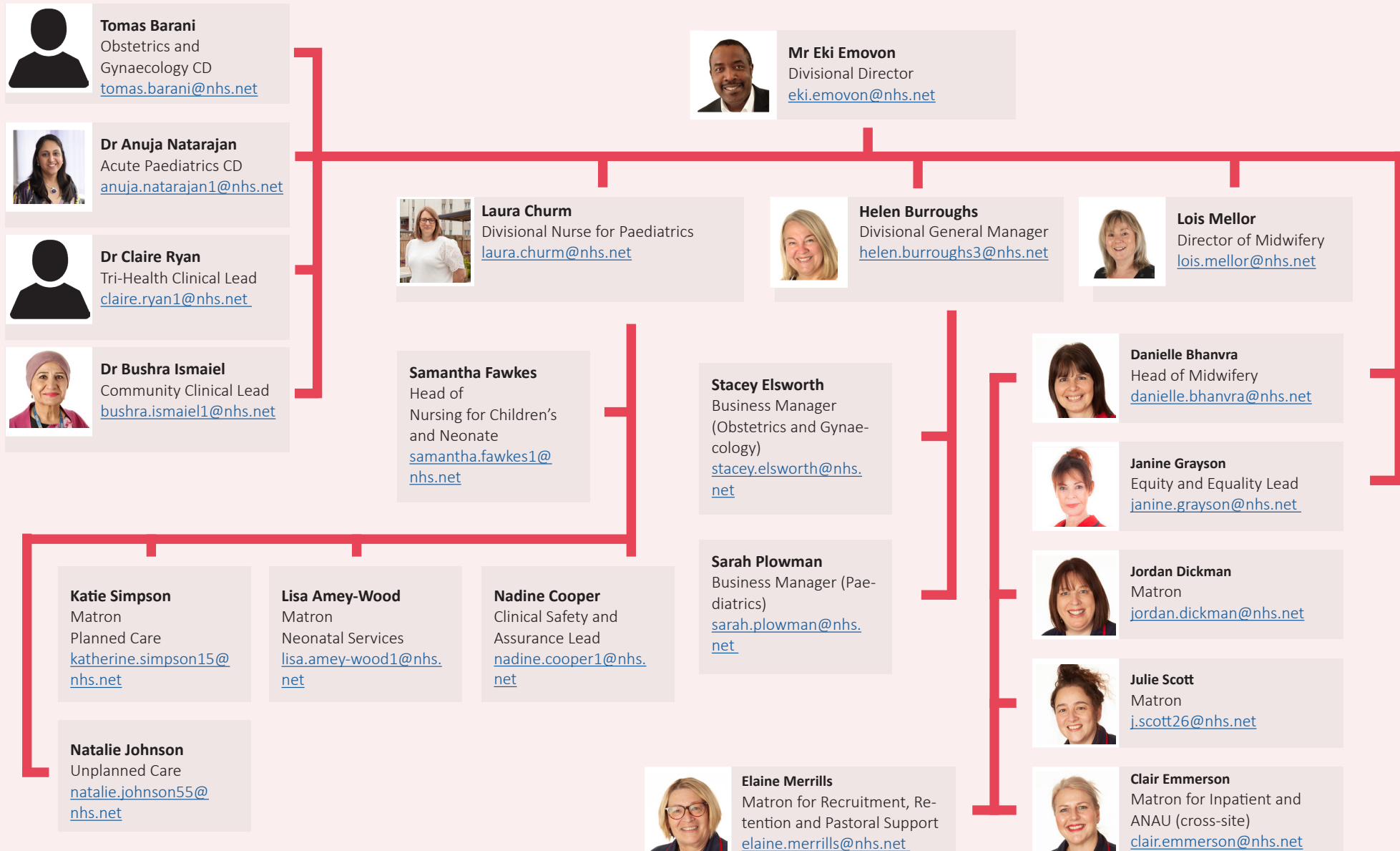
**Karen Hill**

Lead Nurse Orthopaedic Trauma  
[karen.hill17@nhs.net](mailto:karen.hill17@nhs.net)

## Clinical Specialist Services structure



## Women and Children structure



# Supporting services for Divisions

## Medicine



**Adam Evans**  
Senior People Business Partner  
[adam.evans2@nhs.net](mailto:adam.evans2@nhs.net)



**Carol Orr**  
Education Lead- General  
Medicine  
[carol.orr1@nhs.net](mailto:carol.orr1@nhs.net)



**Ben Assifuah**  
Finance Business Partner  
[ben.assifuah@nhs.net](mailto:ben.assifuah@nhs.net)



**Dr Helen Meynell**  
Clinical Governance Lead  
[helen.meynell@nhs.net](mailto:helen.meynell@nhs.net)



**Dr Cristina Oncia**  
Clinical Governance Lead  
[cristina.oncia@nhs.net](mailto:cristina.oncia@nhs.net)



**Adam Ahern**  
Information and Performance  
Business Partner  
[aahern@nhs.net](mailto:aahern@nhs.net)

## Surgery



**Laura Fawcett**  
Senior People Business Partner  
[laura.fawcett7@nhs.net](mailto:laura.fawcett7@nhs.net)



**Kay Housley**  
Education Lead  
[k.housley1@nhs.net](mailto:k.housley1@nhs.net)



**Matthew Fuller**  
Finance Business Partner  
[matthew.fuller@nhs.net](mailto:matthew.fuller@nhs.net)



**Mr Duncan Drury**  
Clinical Governance Lead  
[duncan.drury@nhs.net](mailto:duncan.drury@nhs.net)



**Chanele Fawcus**  
Quality and Compliance Lead  
[chanele.fawcus@nhs.net](mailto:chanele.fawcus@nhs.net)



**Richard Fenton**  
Information and Performance  
Business Partner  
[r.fenton@nhs.net](mailto:r.fenton@nhs.net)

## Clinical Specialty Services



**Jayne Lang**  
Senior People Business Partner  
[jayne.lang@nhs.net](mailto:jayne.lang@nhs.net)



**Natalie McCarthy**  
Education Lead  
[natalie.mccarthy10@nhs.net](mailto:natalie.mccarthy10@nhs.net)



**Charlotte Jallow**  
Finance Business Partner  
[charlotte.jallow2@nhs.net](mailto:charlotte.jallow2@nhs.net)

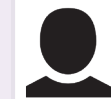


**Emma Galloway**  
Interim Governance Lead  
[emma.galloway@nhs.net](mailto:emma.galloway@nhs.net)



**Matthew Munday**  
Information and Performance  
Business Partner  
[matthew.munday1@nhs.net](mailto:matthew.munday1@nhs.net)

## Urgent and Emergency Care



**Sonia Clarke**  
Education Lead - Acute  
Medicine  
[sonia.clark2@nhs.net](mailto:sonia.clark2@nhs.net)

## Women and Children



**Adam Evans**  
Senior People Business Partner  
[adam.evans2@nhs.net](mailto:adam.evans2@nhs.net)



**Lynn Crewe**  
Education Lead - Families  
[lynne.crewe@nhs.net](mailto:lynne.crewe@nhs.net)



**Janette Swinwood**  
Education Lead - Children  
[janette.swinwood@nhs.net](mailto:janette.swinwood@nhs.net)



**Hayley Alton**  
Finance Business Partner  
[hayley.alton@nhs.net](mailto:hayley.alton@nhs.net)



**Denise Morgan**  
Clinical Governance Lead  
[denise.morgan2@nhs.net](mailto:denise.morgan2@nhs.net)



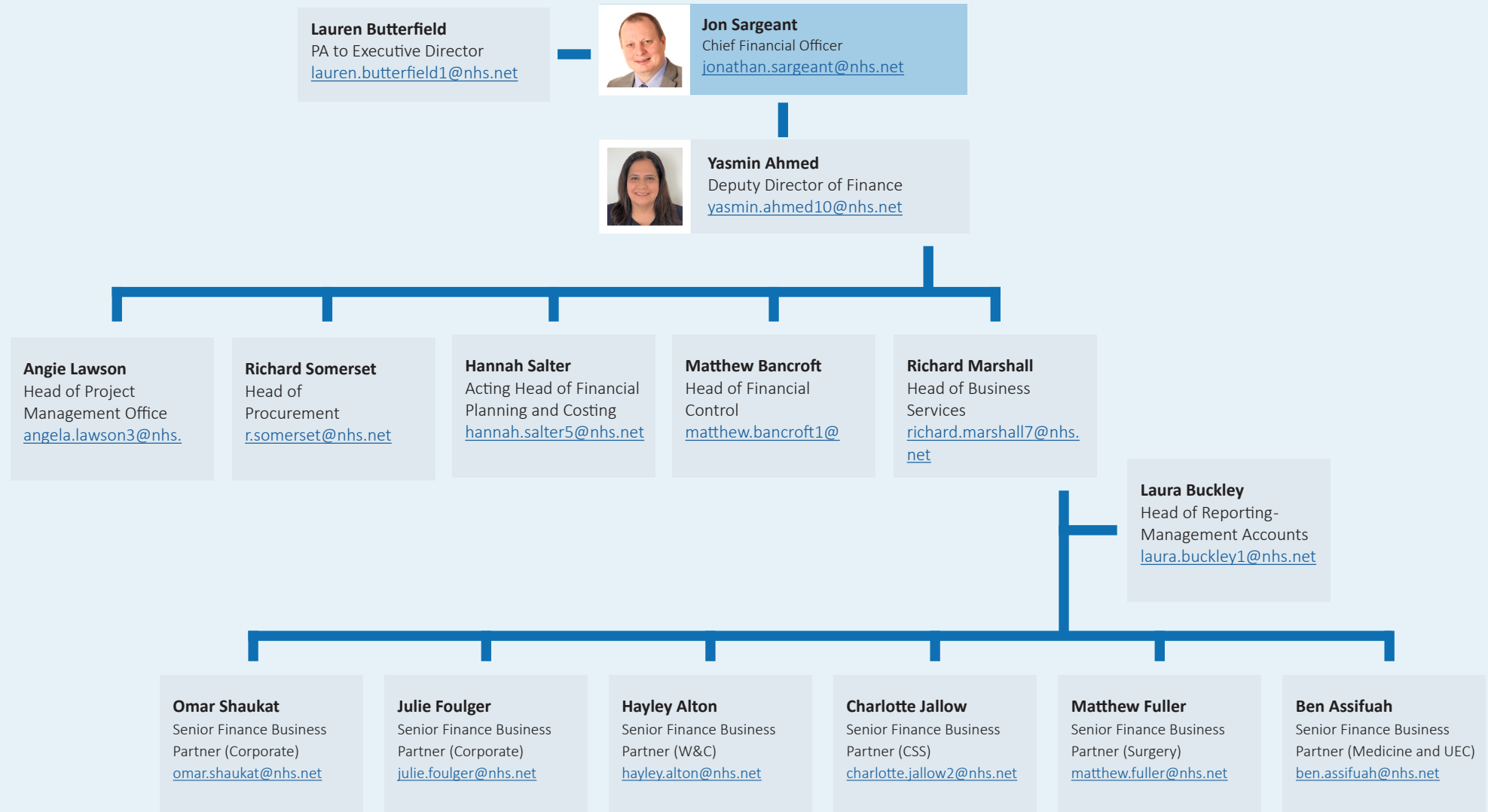
**Claire Booth**  
Information and Performance  
Business Partner  
[claire.booth8@nhs.net](mailto:claire.booth8@nhs.net)

## Corporate directorates

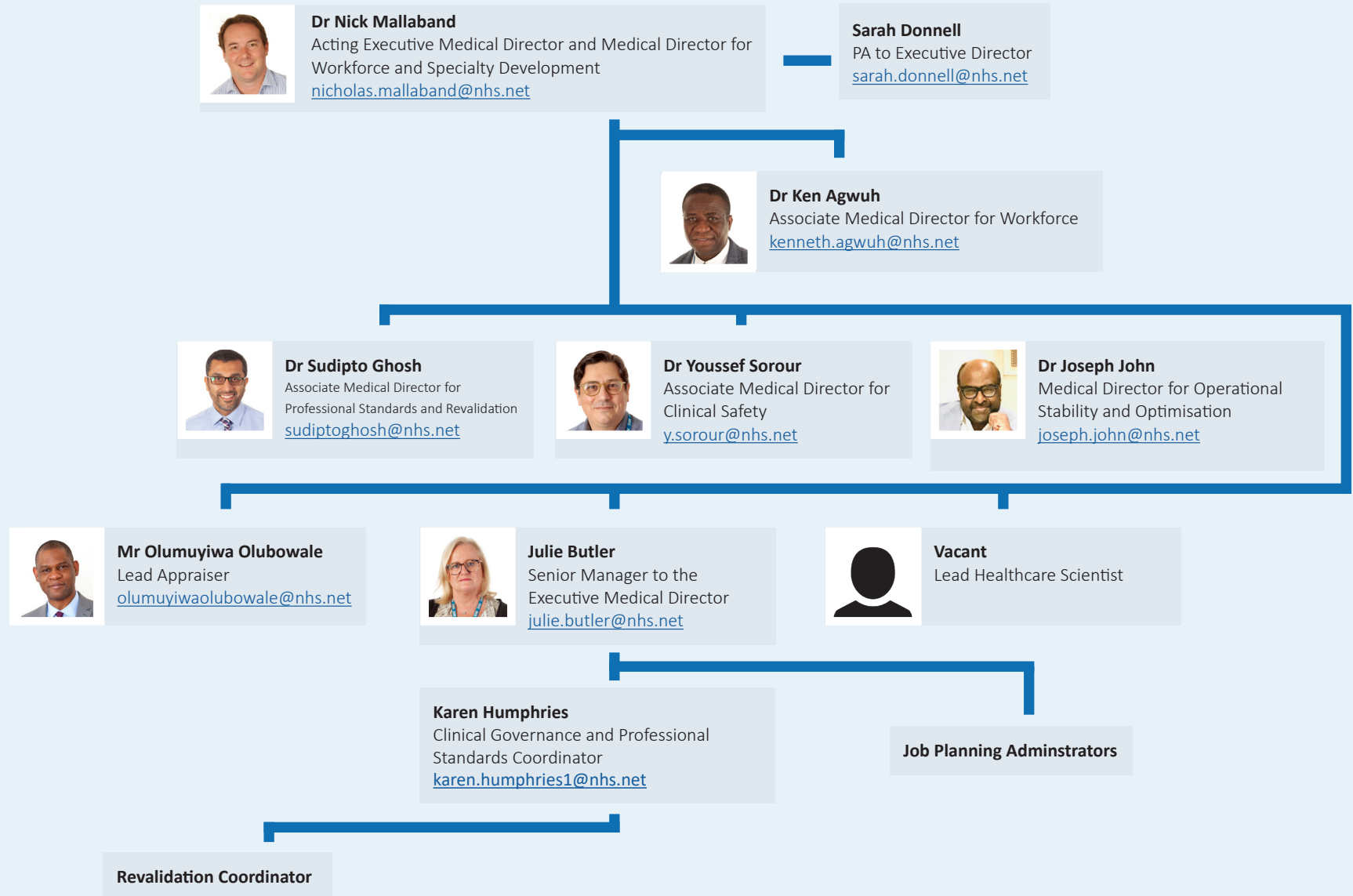


**Louise Thompson**  
Education Lead  
[louise.thompson10@nhs.net](mailto:louise.thompson10@nhs.net)

## Finance structure



## Medical Director directorate structure

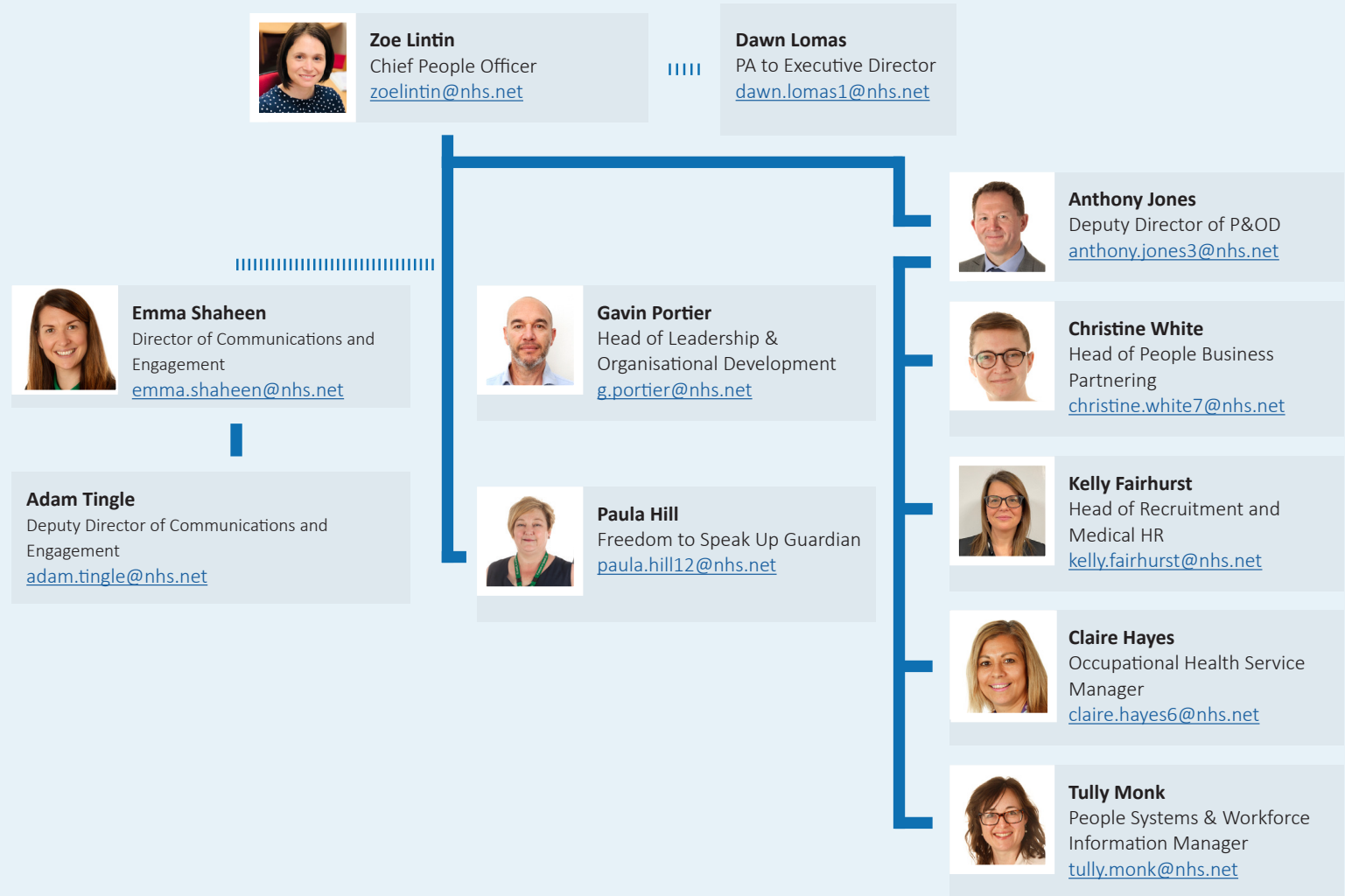


# People and Organisational Development (P&OD)

## P&OD services

**Occupational Health.** Health and Wellbeing. **Casework Team.** Recruitment. **Medical HR.** HR People and Business Partners. **ESR.** eRoster. **eExpenses.** P&OD Workforce Systems. **DBTH Workforce Information.** SBS Liason and Payroll. **Agency and Bank Workforce Solutions.** Widening Access. **Communications.** Graphics. **Medical Photography.**

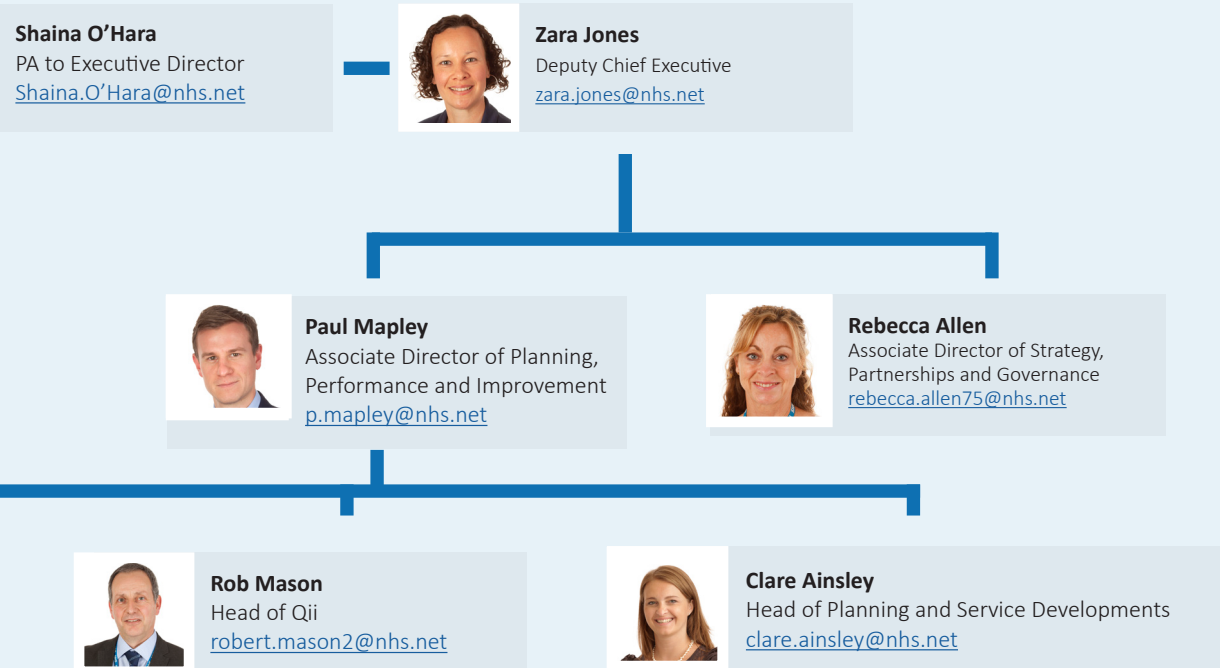
## P&OD structure



For the Executive portfolio **click the icon.**

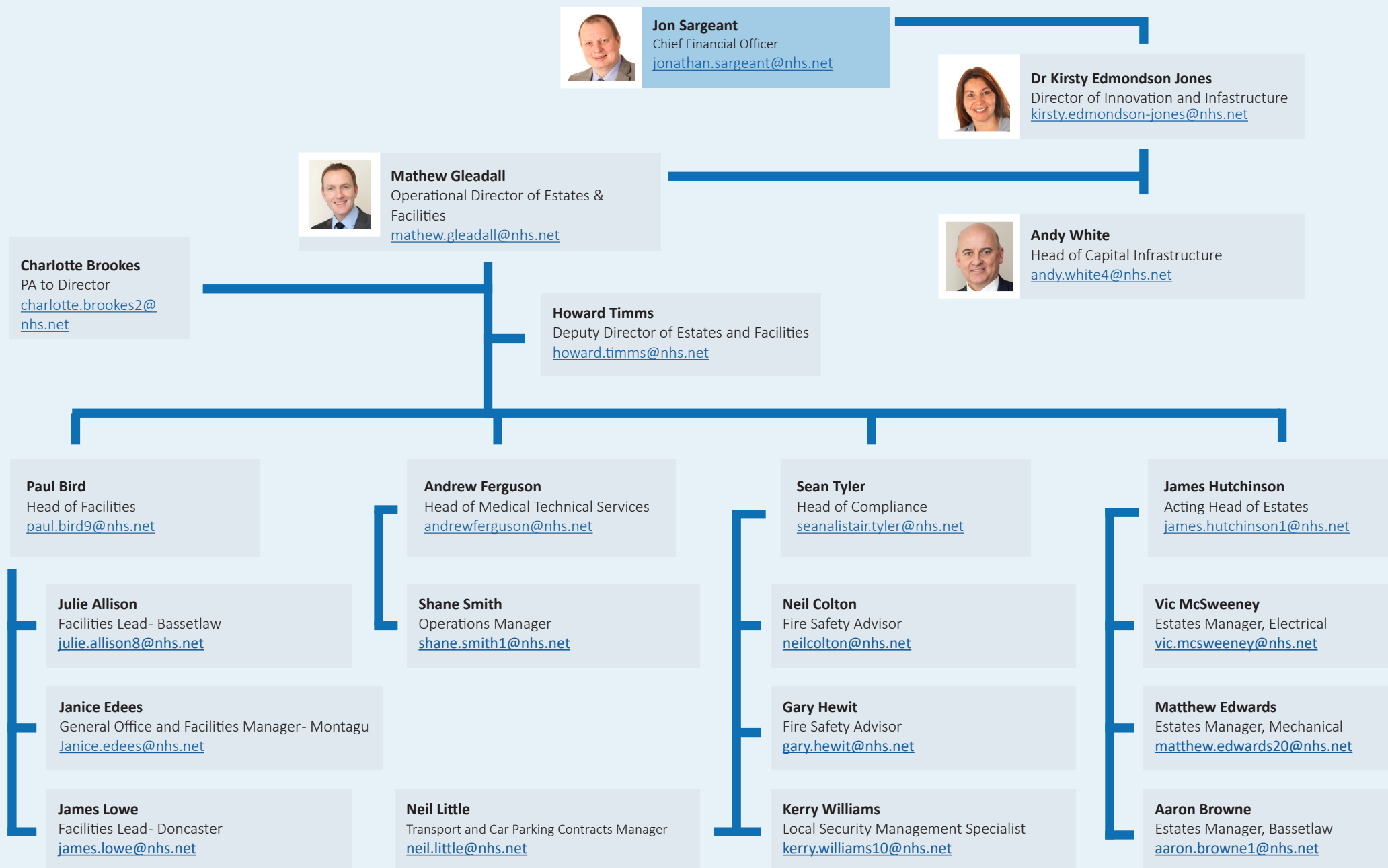


## Deputy Chief Executive directorate structure

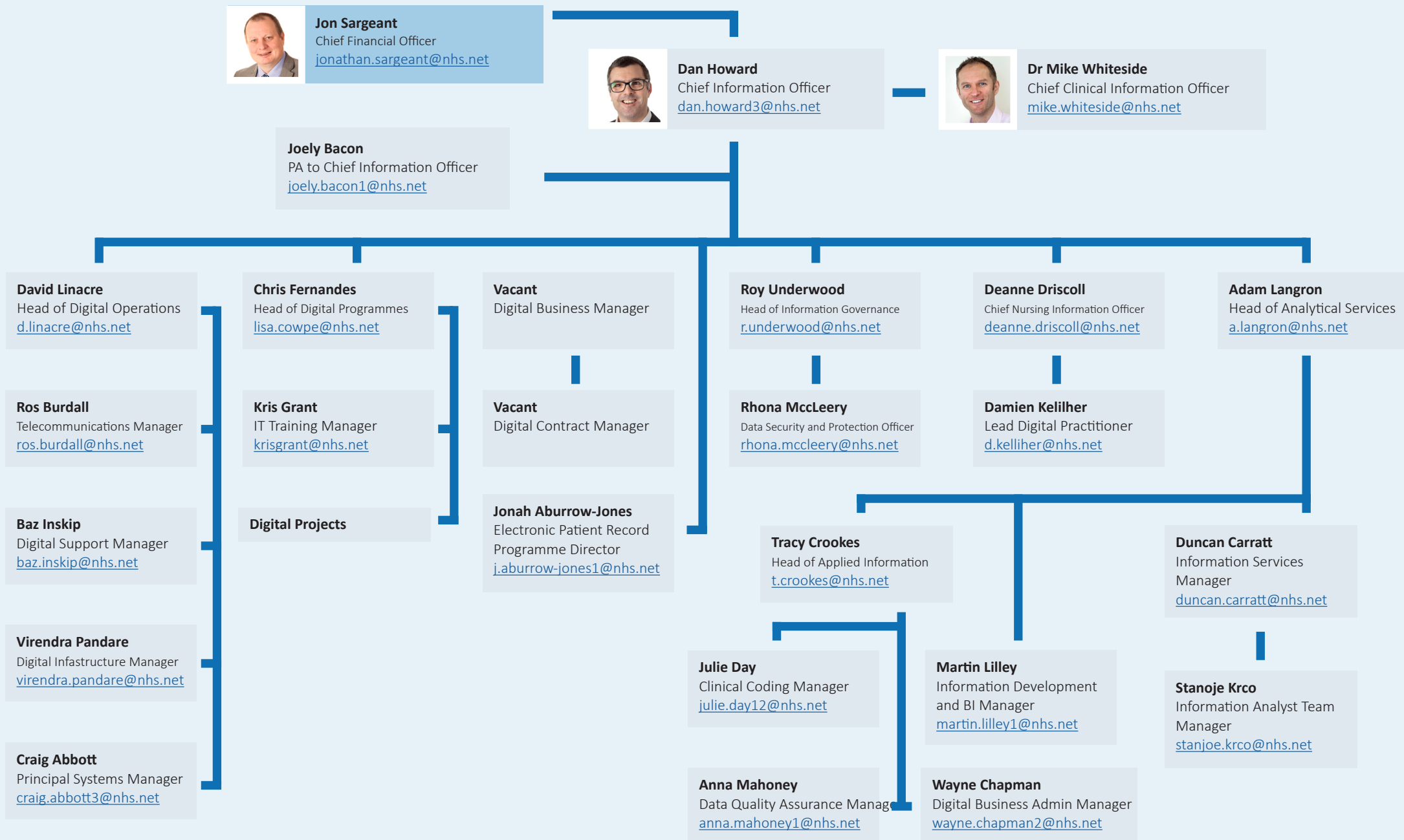




## E&F structure

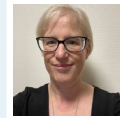


## Digital Transformation structure



# Nursing, Midwifery and AHP leadership

## Nursing, Midwifery and AHP structure



**Karen Jessop**  
Chief Nurse  
[Karen.Jessop@nhs.net](mailto:Karen.Jessop@nhs.net)

**Leanne Shaw**  
PA to Executive Director  
[leanne.shaw5@nhs.net](mailto:leanne.shaw5@nhs.net)



**Dr Ken Agwuh**  
Director of Infection & Control  
[kenneth.agwuh@nhs.net](mailto:kenneth.agwuh@nhs.net)



**Lorna Ball**  
Divisional Nurse Medicine  
[lorna.ball@nhs.net](mailto:lorna.ball@nhs.net)



**Laura Churm**  
Divisional Nurse for Paediatrics  
[laura.churm@nhs.net](mailto:laura.churm@nhs.net)



**Elizabeth Dunwell**  
Divisional Nurse for Surgery  
[elizabethdunwell@nhs.net](mailto:elizabethdunwell@nhs.net)



**Emma Galloway**  
Divisional Nurse for Clinical  
Support Services  
[emma.galloway@nhs.net](mailto:emma.galloway@nhs.net)



**Joanna Stedman**  
Division Nurse for UEC  
[joanna.stedman3@nhs.net](mailto:joanna.stedman3@nhs.net)



**Lois Mellor**  
Director of Midwifery  
[lois.mellor@nhs.net](mailto:lois.mellor@nhs.net)



**Simon Brown**  
Deputy Chief Nurse  
[Simon.Brown27@nhs.net](mailto:Simon.Brown27@nhs.net)



**Professor Parveen Ali**  
Professor of Nursing  
[parveen.ali@sheffield.ac.uk](mailto:parveen.ali@sheffield.ac.uk)



**Heather Jackson**  
Director of Allied Health Professionals  
[heather.jackson@nhs.net](mailto:heather.jackson@nhs.net)

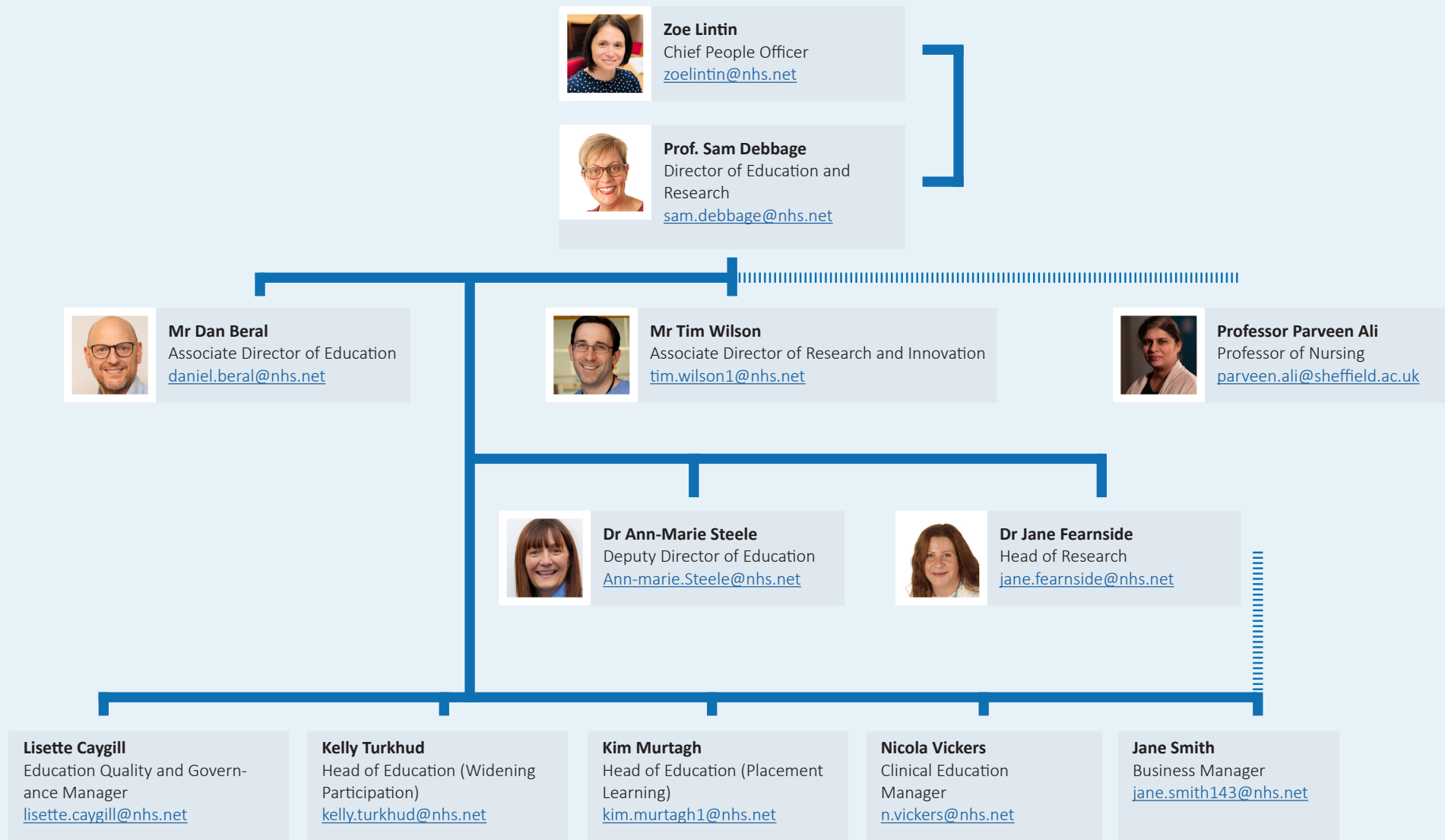


**Kirsty Clarke**  
Associate Chief Nurse - Safe  
Staffing  
[kirsty.clarke4@nhs.net](mailto:kirsty.clarke4@nhs.net)

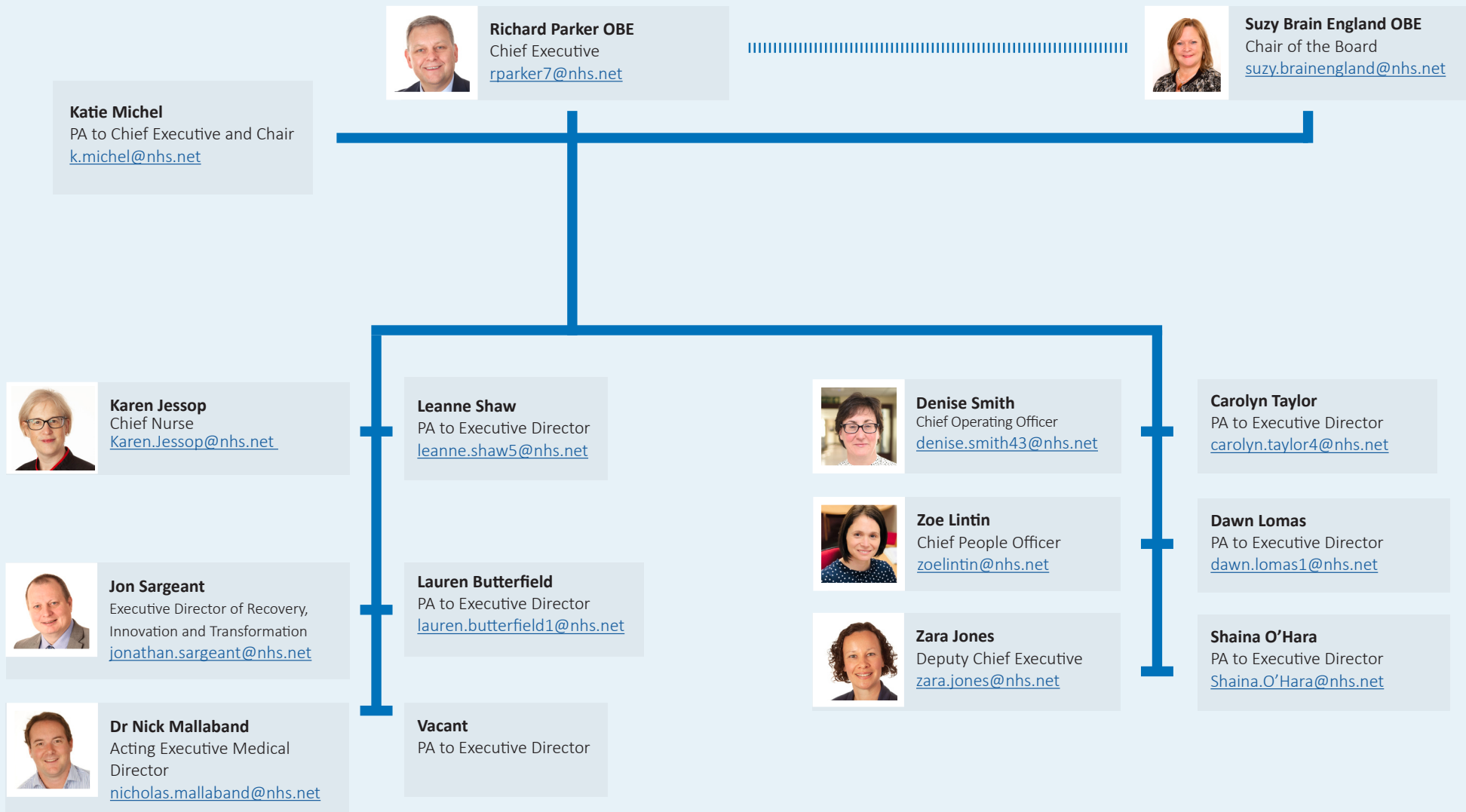


**Marie Hardacre**  
Associate Chief Nurse for  
Patient Safety and Quality  
[m.hardacre@nhs.net](mailto:m.hardacre@nhs.net)

## Education and Research structure



## Executive Directors structure





**Doncaster and Bassetlaw  
Teaching Hospitals  
NHS Foundation Trust**

Document designed by the Trust's Communications Team © 2024